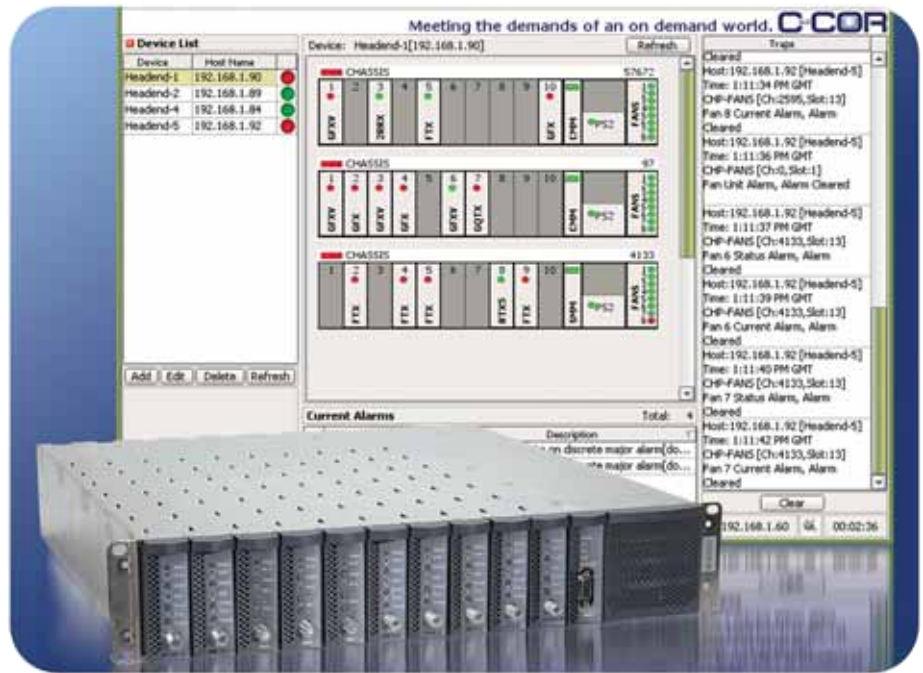




C-COR® CHP Max5000 CORView

Element Management Software



C-COR® CHP Max5000 CORView element management software allows broadband service providers to monitor all devices installed in the CHP Max5000 chassis in your HFC network. By collecting and displaying the alarm status of CHP Max5000s in a network, CORView fills a vital role in the ARRIS network management solutions.

CORView is a graphically-intuitive, Java-based application that is launched from any web browser running on any computer platform (Windows, Mac OS, Linux, etc.) providing more features and functionality than the CHP Max™ Craft Management Software. Its Java Web Start technology facilitates integration with OSS network management applications by means of its web interface, and brings the richness of a desktop application to user management workstations.

CORView server provides comprehensive monitoring of the CHP Max HFC network by recording, centralizing, and reporting traps to all the connected CORView clients. The server monitors the CHP Max network, continuously using proactive polling, automatic trap-based triggers, and user-commanded updates that allows the user access to the most current status of the network's health.

Features

- Java Web Start technology
- Monitors all installed modules in each CHP Max5000 chassis in the CHP network
- Displays all active alarms and traps
- Provides inventory of the modules and chassis in the network
- Displays firmware revision of all modules

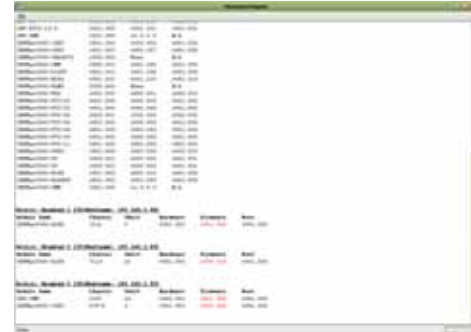
- Client server architecture with Java Web Start technology
- Provides comprehensive overview of CHP-based HFC network health and capacity
- Automatically discovers the modules in the monitored system

C-COR® CHP Max5000 CORView Element Management Software

- Reports current revision of hardware, firmware, and boot software of each network module
- Friendly and intuitive graphical user interface (GUI)
- Generates an alarm history that can be sorted by a variety of criteria
- Multi-language support (English, Dutch, French, German, Spanish)etc



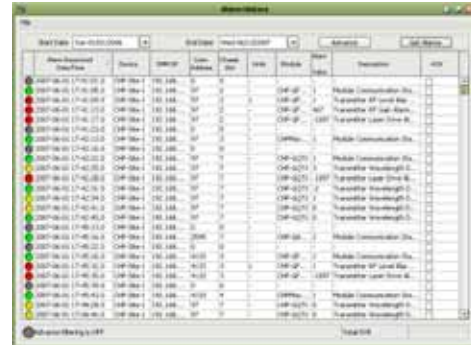
CORView's GUI is intuitive and easy to navigate, displaying all of the modules in each chassis.



CORView can generate detailed firmware and inventory reports covering every chassis and module in the network.



Each module in the chassis may be viewed in detailed alarm and note views.



CORView can generate an alarm history that can be sorted by a variety of criteria.

Ordering Information

Part Number	Description
COR-SYS-SRV	CORView CHP Max5000 management system (basic model, up to 25 clients), including system server hardware, system CD, MySQL license, 5 client licenses.
COR-SYS-SRV-MAINT	Annual maintenance for the server version of the CORView CHP Max5000 management system. Pricing is per server license per year.
COR-SYS-SRV-UPG	CORView CHP Max5000 management system CD for upgrading software on servers in which annual maintenance is purchased.
COR-SYS-CLT-5	CORView CHP Max5000 management system, 5 additional client licenses.



The capabilities, system requirements and/or compatibility with third-party products described herein are subject to change without notice. ARRIS, the ARRIS logo, C3™, C4™, CableEdge®, Cadant®, C-COR®, CHP Max®, Cornerstone®, CXM™, D5™, Digicon®, Flex Max®, Keystone™, MONARCH®, n5™, nABLE™, NSM™, nVision™, PLEXIS®, Regal®, ServAssure™, TeleWire Supply™, Touchstone®, VoiceAssure™, and WorkAssure™ are all trademarks of ARRIS Group, Inc. Other trademarks and trade names may be used in this document to refer to either the entities claiming the marks and the names of their products. ARRIS disclaims proprietary interest in the marks and names of others. © Copyright 2008 ARRIS Group, Inc. All rights reserved. Reproduction in any manner whatsoever without the express written permission of ARRIS Group, Inc., is strictly forbidden. For more information, contact ARRIS.

CORV-D-0208

